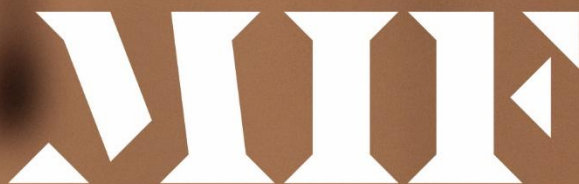


**What to  
Expect Guide**

**4-20 JUL  
RISE INAVATE  
CENTRE,  
ROCHDALE**

**SHILPA  
GUPTA**

**YOU ARE THE PLACE**



**manchester  
international  
festival  
2025 3-20 Jul**

## WHAT TO EXPECT GUIDE

This guide has important information about **Shilpa Gupta: You Are The Place** including **when and where** the event will happen and information about **access provisions**.

The guide has some information about **what will happen** at the event. The event is still being made, so some things **may change**.

### What is 'Shilpa Gupta: You Are The Place'?

Shilpa Gupta: You Are The Place is an **exhibition**, with audio and visual art.

### Manchester International Festival

The event is part of Manchester International Festival (MIF).

MIF is a festival that happens every 2 years in Manchester bringing the most exciting artists on the planet to Manchester to create new work.

## WHERE WILL IT HAPPEN?



This event is at **RISE Inavate Centre.**

The address is **RISE Inavate Centre, Smith St, Rochdale OL16 1YH.**

The what3words are **rivers.bats.cloud.**

## Getting to the venue



For transport information please **visit:**

<https://factoryinternational.org/mif25-venue-access-information/rise-inavate-centre/>.

## Venue Entrance



The entrance to the venue is via a long ramp on Smith Street or down a small flight of stairs.

The venue can be approached from **Milton Street** or **John Street**, turning on to Smith Street. The venue can also be approached from the pedestrianised

part of **Smith Street**.

## VENUE ACCESSIBILITY



There is one **accessible toilets**. You do not need a radar key to use the accessible toilets.



The venue is **step-free**. The floor is a mixture of smooth concrete and carpeted floor. There are small ramps into the exhibition spaces.



There is a **range of seating** available.



There is a **chill out space** at this venue.



**Assistance dogs** are welcome in our building.

## ABOUT THE EVENT



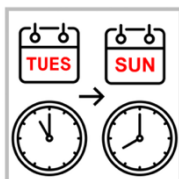
This event is an **exhibition** with three parts:

- An **audio installation** (about 15 minutes long)
- **Visual artwork** made by **Shilpa Gupta**
- **Visual artwork** made by the **community of Rochdale**

## Dates and Times



The exhibition is open from **4<sup>th</sup> July - 20<sup>th</sup> July**.



The venue is open from **Tuesday to Sunday** between **11am and 8pm**



### Tickets

You do not need a ticket for this event. Just turn up.

## ABOUT THE EXHIBITION



The exhibition is in **three rooms**, which you can move around **at your own pace**. The floor is a mixture of smooth concrete, carpeted floor and astroturf.



You can **stay as long as you like**. You can **take breaks** and **re-enter** as needed.



The space will have **very low lighting**.



**Temperatures** in the rooms may be **cool**.



The **audio installation is looped**, and you can begin at any point.



The exhibition features **multiple different languages**. There is no translation available.

## EXHIBITION ACCESS



There will be a **transcript** available for audio installation, in the original languages of the piece. It is available on request.



**Audio description** will be available. It will be a pre-recorded introduction to the space, available online. You can listen on your own device or borrow one of ours.

A rectangular icon with a thick black border containing the word 'RELAXED' in a bold, sans-serif font.

**RELAXED**

There will be **relaxed time slots** for this exhibition where you are welcome to make noise and respond to the art in a way that feels right to you.

The capacity will be reduced, and the lighting will be increased slightly.

Relaxed time slots are available on:

- Thursday 10 July 6-7pm
- Tuesday 15 July 11am-12pm
- Sunday 20 July 3-4pm



For more information about the event and venue, please visit:  
**[factoryinternational.org/whats-on/shilpa-gupta/](https://factoryinternational.org/whats-on/shilpa-gupta/)**

To speak to our team, you can email us at  
**[access@factoryinternational.org](mailto:access@factoryinternational.org)** or call us on **0161 817 4531**. Our phonenumber is open Monday-Saturday, 10am–6pm.

This guide was produced by Factory International with support from Touretteshero CIC.

PUBLIC SECTOR FUNDERS



MEDIA PARTNERS

