

What to Expect Guide

4-20 JUL
AVIVA STUDIOS

FESTIVAL SQUARE

VIII

manchester
international
festival
2025 3-20 Jul

WHAT TO EXPECT GUIDE

This guide has important information about **Festival Square** including **when and where** the event will happen and information about **access provisions**.

The guide has some information about **what will happen** at the event. The event is still being made, so some things **may change**.

What is 'Festival Square'?

Festival Square is a series of **live music** and **performances**.

Manchester International Festival

The events are part of Manchester International Festival (MIF).

MIF is a festival that happens every 2 years in Manchester bringing the most exciting artists on the planet to Manchester to create new work.

WHERE WILL IT HAPPEN?



This event is at **Aviva Studios** and uses our indoor and outdoor spaces on the **ground floor**.

The address is **Aviva Studios, Water Street, Manchester M3 4JQ.**

The what3words is: **chop.feeds.chase.**

Getting to the venue



For transport information please visit:
<https://factoryinternational.org/aviva-studios/#getting-here>.

Aviva Studios Entrance

You can approach Aviva Studios from **Liverpool Road** or **Quay Street**. Once you're inside, you will enter 2 large double doors and head to the first floor by stairs or lift.

The building will be **busy and noisy** during the festival.

If you need **help** you can ask a member of our team. **FOH wear orange t-shirts**, and **volunteers wear red t-shirts**.

VENUE ACCESSIBILITY



There are **accessible toilets** on the **ground floor** and the **first floor**. You do not need a radar key to access the toilets. There are gendered and gender-neutral facilities.



There is a **Changing Places toilet** on the **ground floor**.



Assistance dogs are welcome in our building.



There is a **chill out space** at Aviva Studios. It is on the **ground floor**, in the Lab.



Portable sensory kits are available.

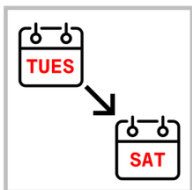


There is an **accessible viewing platform** by the outdoor stage. It is accessed by ramp and is first-come, first-served.

ABOUT THE EVENT



Festival Square is a series of **live music** and **performances** including family events, spoken word, live bands and late-night DJ sets.



Festival Square will be open from **Tuesday** to **Saturday**.



Festival Square opens at **12pm** and go on until **late**.

The full programme is on the website:

<https://factoryinternational.org/whats-on/festival-square-mif25/>



You do not need a ticket for any event on Festival Square – **just turn up!**



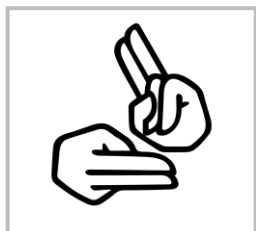
There will be **food stalls and bars**. Some of the food trucks will not have lowered access points. If you need assistance, you can ask any member of staff.



There will be **picnic benches** and other types of seating, inside and outside.

You can choose if you sit close to the music, where it will be **louder**, or away from the music where it will be **quieter**.

ACCESS PERFORMANCES



There will be some events with **BSL interpretation**. For specific dates please check the website:

<https://factoryinternational.org/whatson/festival-square-mif25>

For more information about the event and venue, please visit:
factoryinternational.org/whats-on/festival-square-mif25/

To speak to our team, you can email us at
access@factoryinternational.org or call us on **0161 817 4531**. Our phonenumber is open Monday-Saturday, 10am–6pm.

This guide was produced by Factory International with support from Touretteshero CIC.

PUBLIC SECTOR FUNDERS



MEDIA PARTNERS

