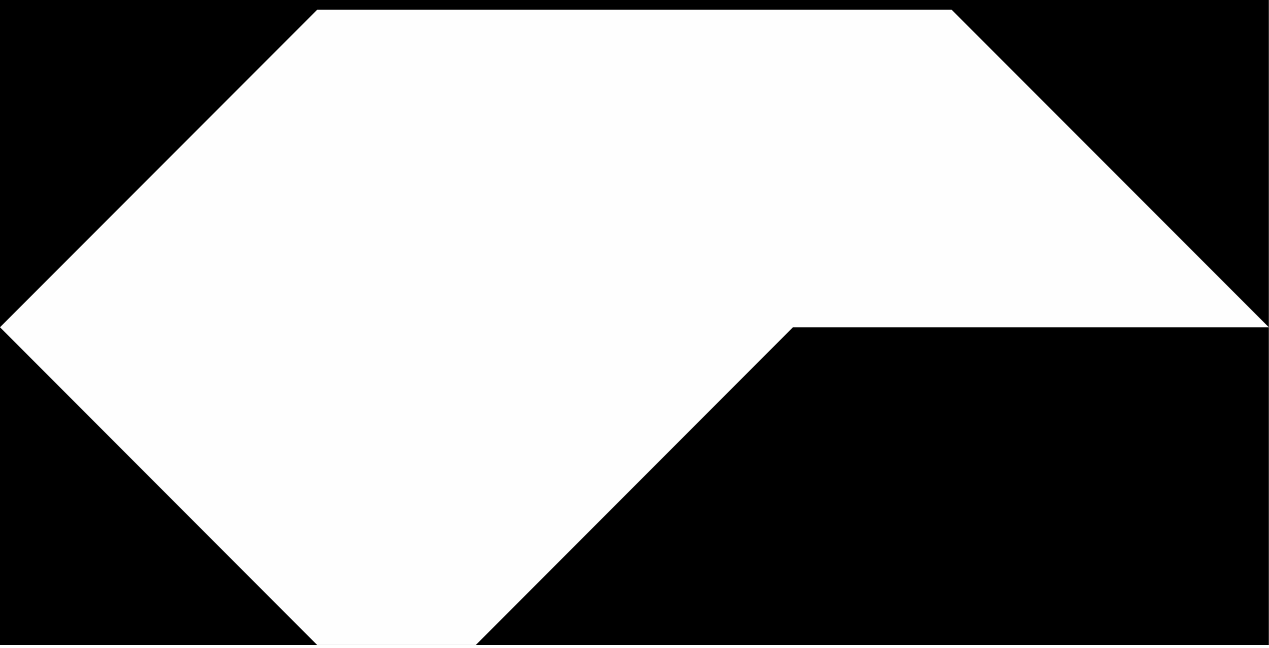
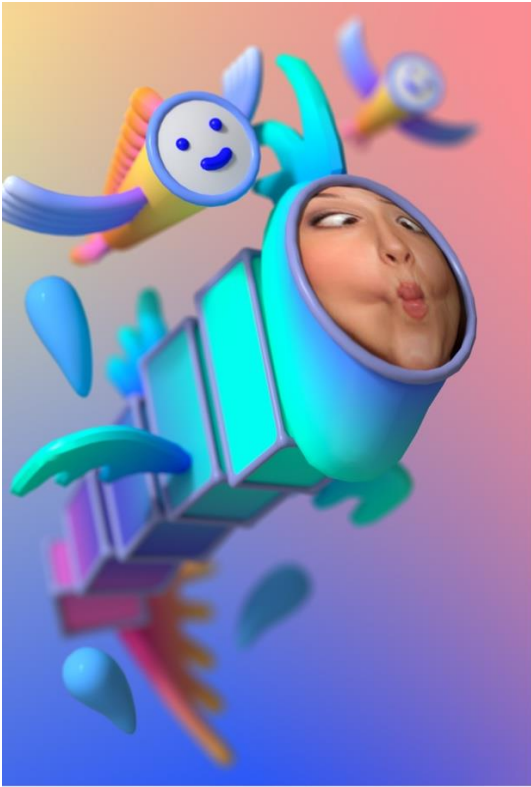


factory
international

WHAT TO EXPECT FACTORY SETTINGS



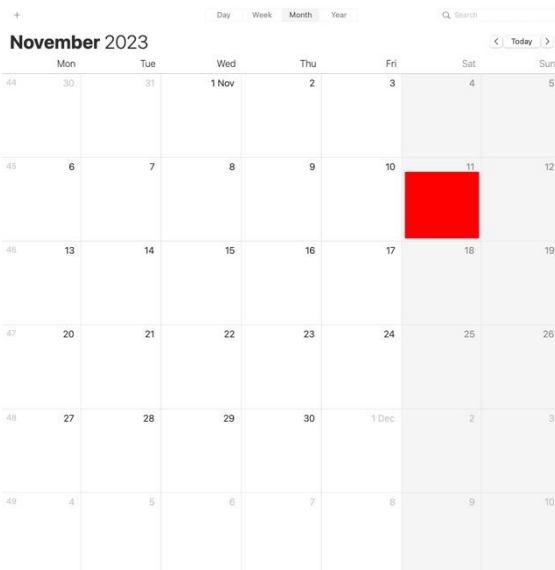


What is the event?

Factory Settings is a new augmented reality (AR) app that you can use on mobile devices like your smartphone.

Augmented reality means when something that isn't real and is made by a computer looks like it is part of the real world.

If you are looking at a real space through your phone or tablet, you will see the artwork as though it is actually there.

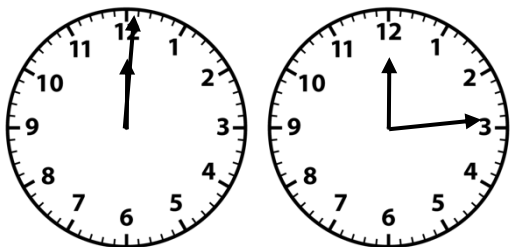


When is the event?

Start Date: 11/11/2023 (12:00 onwards)

End date: 31/12/2024

(You can only explore Factory Setting at Aviva Studios during the times that the building is open)



How long is it?

It will take about 15 minutes to explore Factory Settings, but you can spend as much or as little time as you like using the app.



Where is it?

Factory Settings takes place at Aviva Studios, Water St, Manchester.

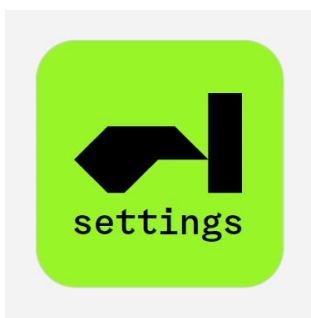
You will see this map in the Factory Settings app. There are three main places (marked with green symbols) where you can see the different creatures.



People who can help

Our Hosts will be able to help you if you need anything during your visit, or if you need help using the app.

They wear black t-shirts with white writing on them, like this.



Where to get the app

You can download the app for free from the Apple App Store, or the Google Play Store.



Where can I use the app?

You can use most of the creature experiences while you are visiting Aviva Studios, in a few different places around the building.

There is one creature experience that you can enjoy wherever you are in the world!



How do I use the app?

First you need to download Factory Settings to your phone or tablet. It is free to download.

When you are at Aviva Studios, open the app and use your phone's camera to scan one of the colourful QR codes around the building – which look like this.

When you do this, you will see moving artworks of the different creatures on your phone/tablet screen. It will look as though they are popping out of the walls or floors.

Don't worry, the creatures are not real. If you put your phone away, you won't see them anymore.



Audience behaviour

- Other people around you might be using Factory Settings – they might laugh or be surprised by the creatures.
- When you use Factory Settings, you will have to record a video or photo of your face. The app will make it look as though your face is part of the creature on screen.
- The app will ask you to move your device around while you are using Factory Settings – this will include looking up and looking down.
- You might feel a bit dizzy when you look up from your phone. Take

your time and sit down if you need to.

Housekeeping information



- There is some written information in the app. If you would rather hear this read out, you can turn on text-to-speech.
- If you want to, you can hear audio descriptions of the creatures in the app. You might want to listen to these before you see the creatures.
- If you already have accessibility settings on your device, the app will use these for you.



Facilities

- There are toilets, including accessible toilets, in the brick arches at the back of the Social through the big silver doors. The toilets are gender neutral which means you can use whichever you want.
- You can buy food and drink from the bar in the Social.

If you have any other questions or concerns about access at Aviva Studios, you can email us on access@factoryinternational.org