

factory
international

**WHAT TO EXPECT
RISHAM SYED:
*EACH TINY DROP***



What is the event?



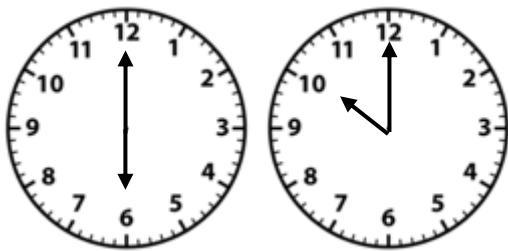
Each Tiny Drop invites people to come to Mayfield Park to collect water specially transported from the Soan River in Punjab and pour it into the River Medlock in Manchester. It is a celebration of water, the life source people often take for granted.

When is the event?

JUNE						
SUN	MON	TUES	WED	THURS	FRI	SAT
				1	2	3
4	5	6	7	8	9	10
11	12	13	14	15	16	17
18	19	20	21	22	23	24
25	26	27	28	29	30	

Each Tiny Drop is on Thursday 29th June from 6pm – 9pm.

Guests can enter the park at the time on their ticket. These entry times are every 10 minutes from 6pm – 9pm.



How long is it

The event runs from 6 - 9pm

You can enter at the time on your ticket, or just drop in on the night - and you can spend as long or short a time as you like in the park.

Venue name and venue entrance

The event is at Mayfield Park.

The entrance will be through the gate in the picture which is the Boardman Gate entrance on Baring Street.

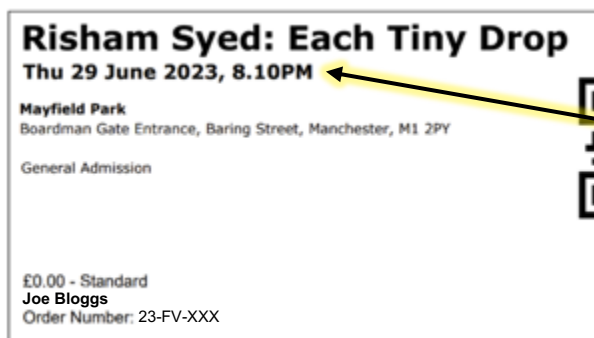


Point of assistance

Staff will be wearing MIF t-shirts and jackets and you can find them by the Boardman Gate entrance.

Venue box office

When you enter through the Boardman gate, our staff will check tickets and allow you into the park.



Venue ticket

The arrow points to the date of show and the time you can enter the park



Seating

This is not a seated event, you can move through the park at your own pace. There are places to sit throughout the park, including a mix of benches with and without arms and backs.



The set or space

The event will take place around Mayfield Park – you'll be moving around on paths and across metal bridges.

What to expect at the event

You can collect water in a small pot at the beginning of your journey and bring it with you as you move through the park. You can listen to a choir and take time to stop and think, before transferring your water into the River Medlock.

What to expect



The event runs from 6pm – 9pm.

You can arrive at the time written on your ticket.

The estimated time for you to enjoy everything at the event is 30 minutes, but you can move at your own pace and leave whenever you are ready.



Audience behaviour

This is a piece with slow, peaceful travel around the park. Everyone will be encouraged to move at their own pace.

It might be a little crowded in places, but there is lots of room in the park to move to somewhere quieter.

You are welcome to join in singing with the chorus.



Housekeeping information

The park is accessible. There are places to sit throughout the park, including a mix of benches with arms and without. You can stop and rest at any point.

Although there is a designated route through the event, you are free to go at your own pace, take breaks and move to quieter areas as you need to.

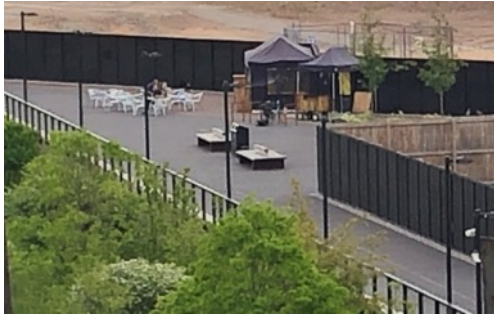
There is one element of the show where some words will be sung in Punjabi – there will be written translations of the poetry in English along the walls of the river for you to read.

While you are at the event, please turn your phone on silent.



Facilities

The toilets including the accessible toilets, can be found at the opposite side of the park to the entrance, near the Playground..



There is a coffee stall near the pottery stall and exit.

Access contact:
access@factoryinternational.org

