

VENUE HIRE

AVIVA studios



THE VENUE

Aviva Studios is a global destination for arts, music and culture – and an event venue like no other.

A cultural landmark in the heart of Manchester, uniquely designed to help you create a one-off experience, excelling in entertainment, culture and hospitality.

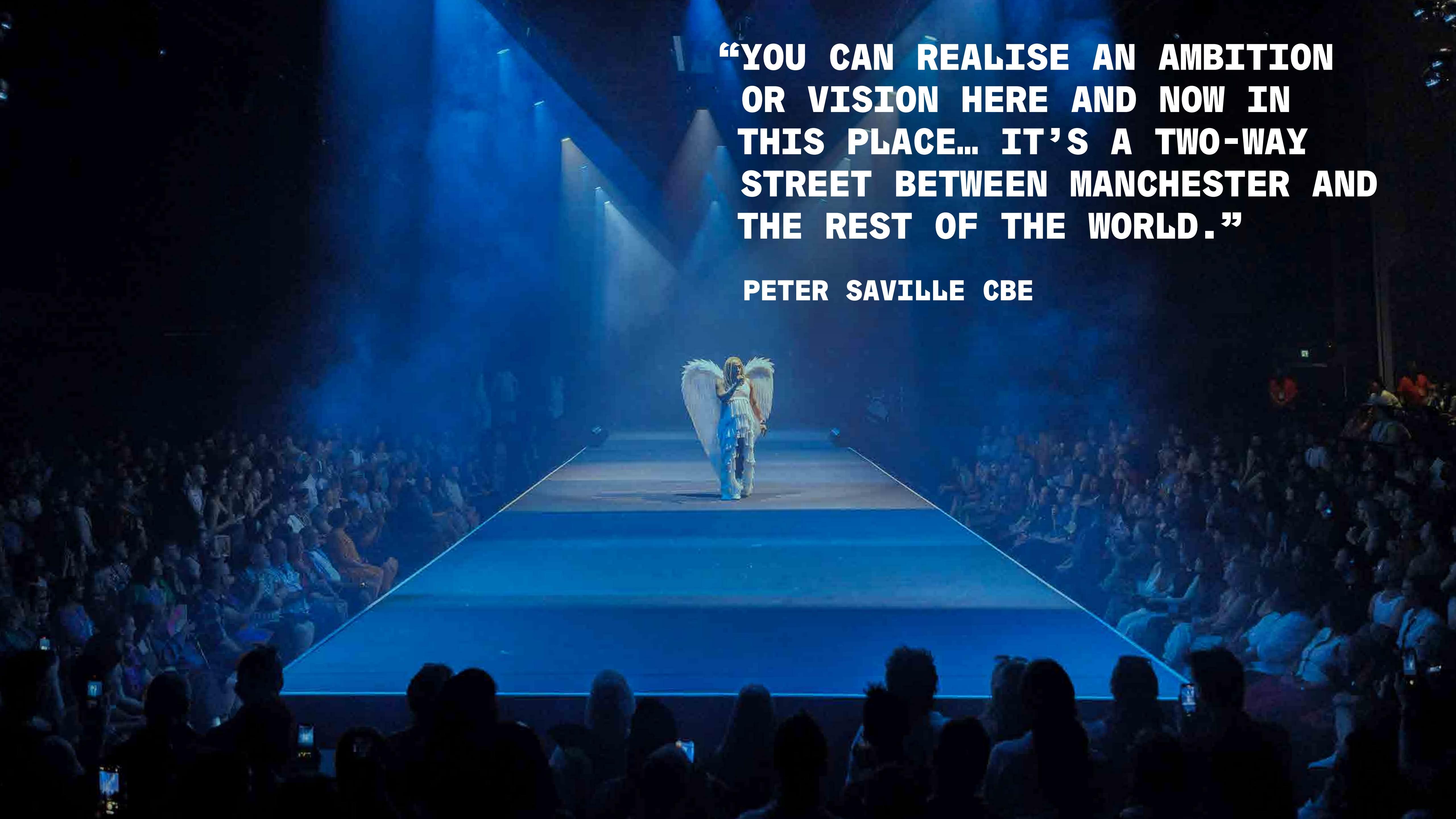
Endless possibilities unfold within the walls of Aviva Studios, where flexible spaces transform to fit your imagination and bring your event to life.

[HEAR MORE ABOUT OUR VENUE ↗](#)

[DISCOVER OUR VENUE ↗](#)

**“YOU CAN REALISE AN AMBITION
OR VISION HERE AND NOW IN
THIS PLACE... IT’S A TWO-WAY
STREET BETWEEN MANCHESTER AND
THE REST OF THE WORLD.”**

PETER SAVILLE CBE



OUR LOCATION

Manchester is a city that never stands still and has always been a beacon for culture in the UK. Our building pays homage to the city, and is a place to make a real statement. Located at the heart of Manchester's creative district, St John's and on the site of former Granada TV Studios, it's a place of history, innovation and buzzing with creativity.

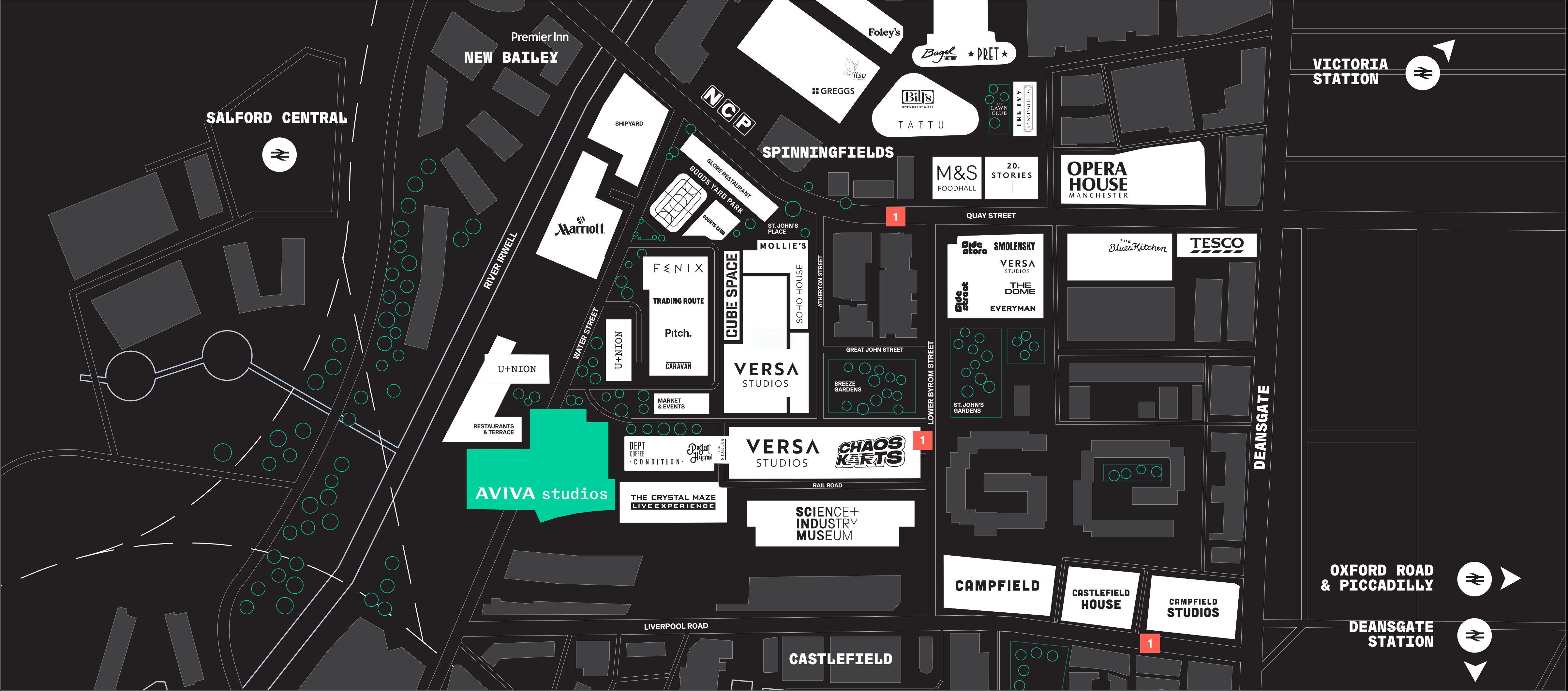
“Manchester is a captivating and inspiring city, renowned for its cosmopolitan atmosphere, diversity, and warm welcome. Visitors are consistently charmed by its friendly spirit, which creates a memorable experience for all who explore its vibrant streets. Hosting your event in Manchester would allow delegates to immerse themselves in this unique urban environment, enhancing their overall experience”

MARKETING MANCHESTER

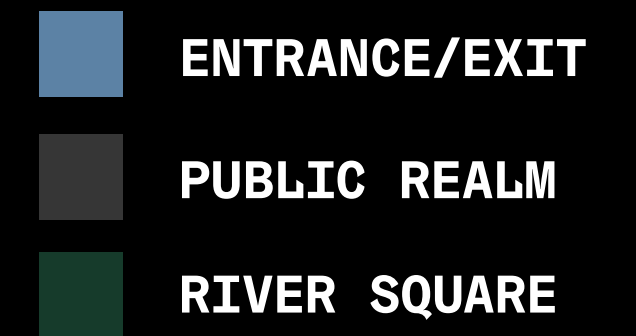
OUR LOCATION ST JOHN'S

1 FREE BUS ROUTE
(TO PICADILLY,
OXFORD ROAD
AND DEANSGATE)

VIEW ON MAPS ↗



THE BUILDING



BACK OF HOUSE

Backstage supporting spaces for visiting artists, companies and events staff, including dressing rooms.

A retractable wall allows the Warehouse to be reconfigured into the North and South Warehouse, providing acoustic separation and allowing multi-use.

[DISCOVER OUR VENUE ↗](#)

THE WAREHOUSE

A supersized space (33m x 66m), capable of holding audiences of up to 2,000 standing up to 4,500 for a gig set-up.

THE LAW FAMILY HALL

A more conventional theatre space split between a fixed balcony and removable stalls, capable of accommodating between up to 1,230 people depending on configuration.

HALL FOYERS

Foyer spaces at Level 2 and 3, wrapping around The Law Family Hall.

SOCIAL

A large volume foyer at ground level under the Warehouse acts as a Welcome hub and arrival space for events.

UNDERCROFT

Outdoor and undercover public realm will support the Factory International programme as well as providing visitors with a setting to enjoy Aviva Studios and the surrounding environment, including the River Irwell – an almost unique experience in central Manchester.

RIVER SQUARE

THE BUILDING

Ultra-flexible and ultra modern, we offer a range of different spaces to suit your every need.



THE BUILDING



THE WAREHOUSE



THE LAW FAMILY HALL



HALL FOYER



THE SOCIAL



UNDERCROFT

THE WAREHOUSE

Our ultra-flexible Warehouse is your ultimate blank canvas. Think everything from epic concerts and product launches to urban sports, fashion shows and gala dinners.



Accommodates up to **2,000 people** (4,500 people for a gig set up).



A **retractable wall** allows you to reconfigure the space into the North and South Warehouse.



Acoustic separation allows multi-use across the venue at any one time.



Direct articulated **truck access**.



Anchor points in the wall to **support any kind of mount or rigging**.



Universal technical grid across the ceiling.

THE WAREHOUSE

From the hottest bands to product launches, our past events in the Warehouse speak for themselves.



THE WAREHOUSE

- 1

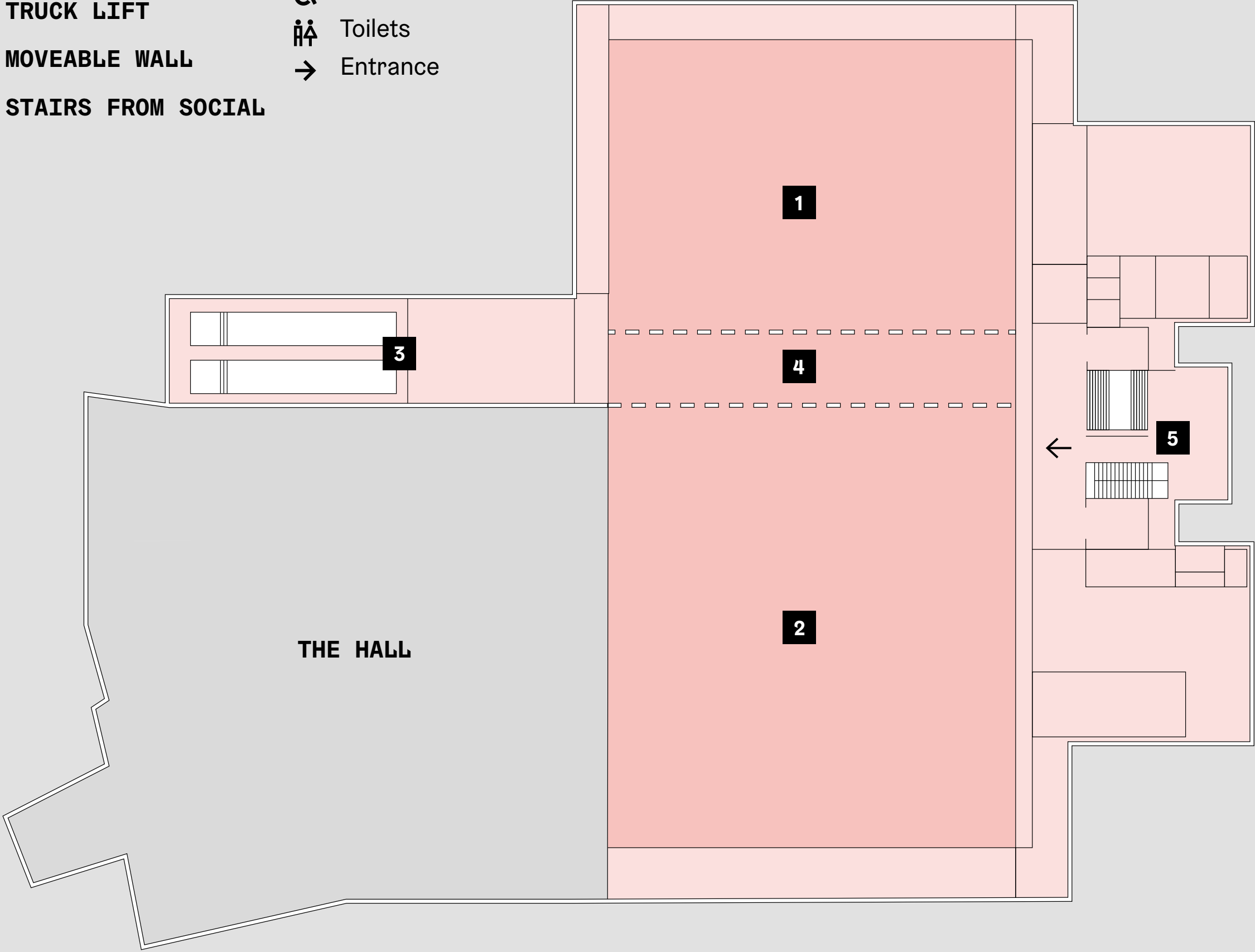
WAREHOUSE NORTH
- 2

WAREHOUSE SOUTH
- 3

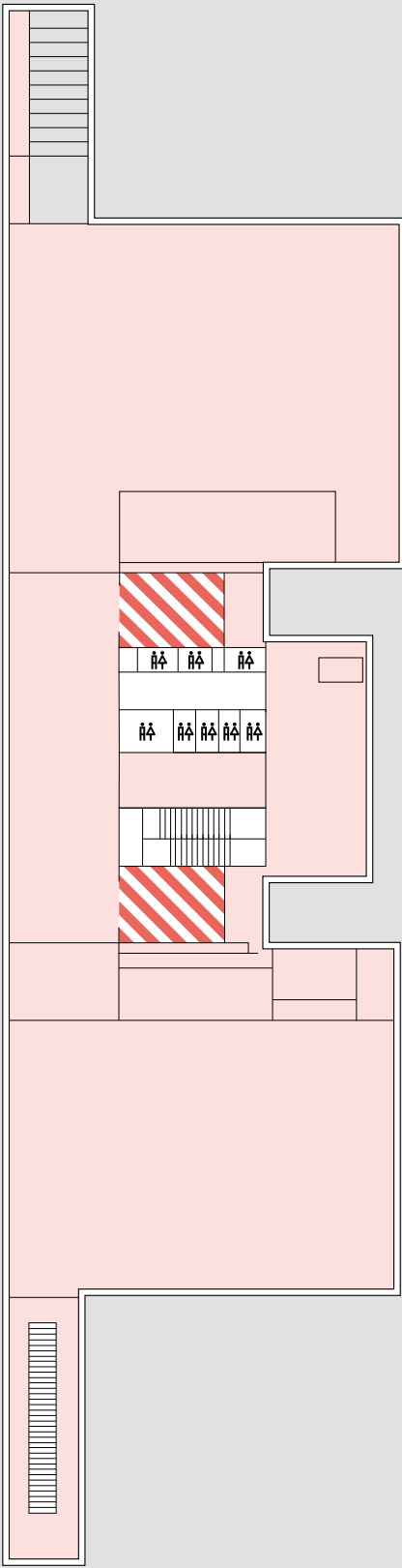
TRUCK LIFT
- 4

MOVEABLE WALL
- 5

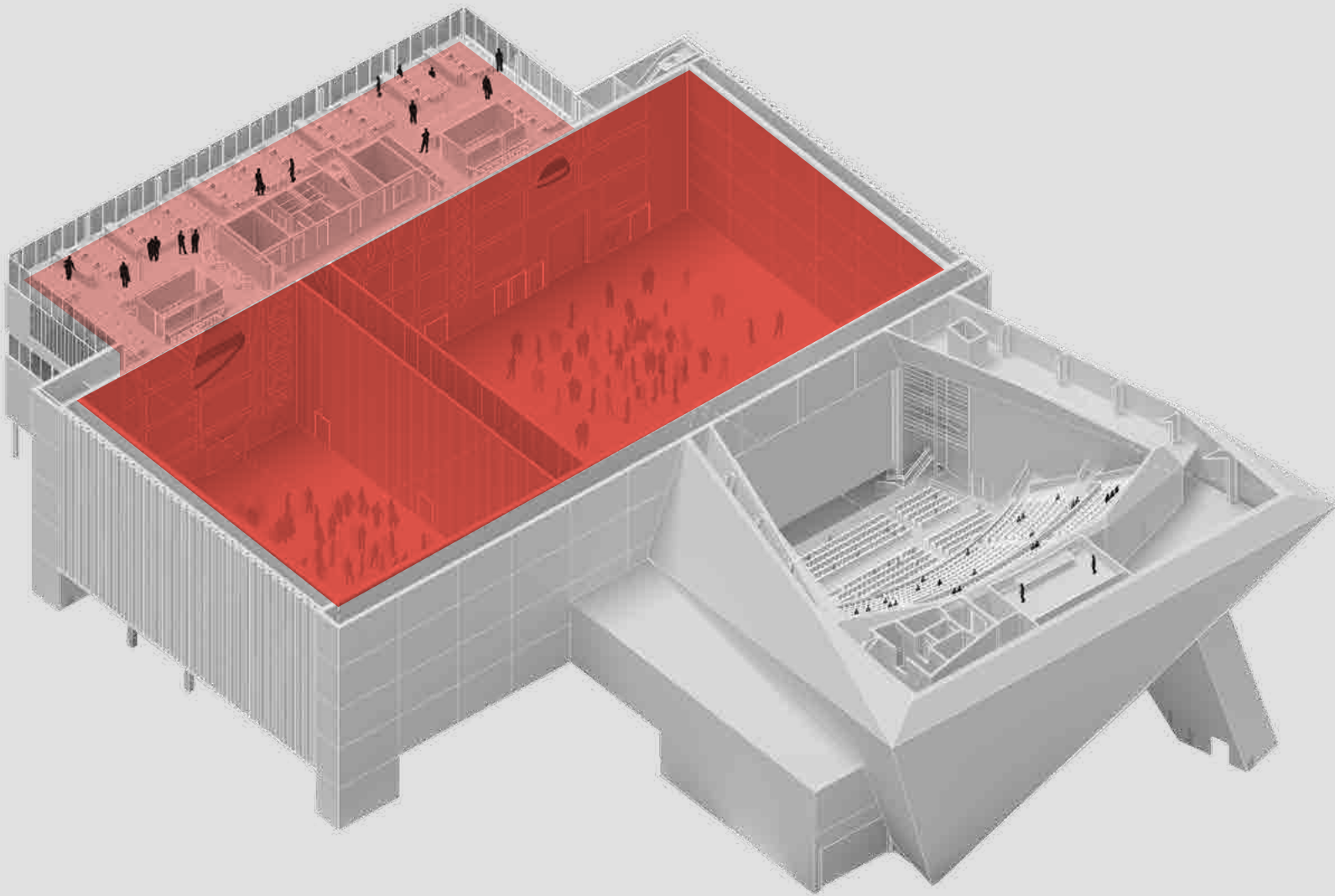
STAIRS FROM SOCIAL
- Lifts
- Stairs
- Accessible
- Toilets
- Entrance



FIRST FLOOR



BACK OF HOUSE TOWERS

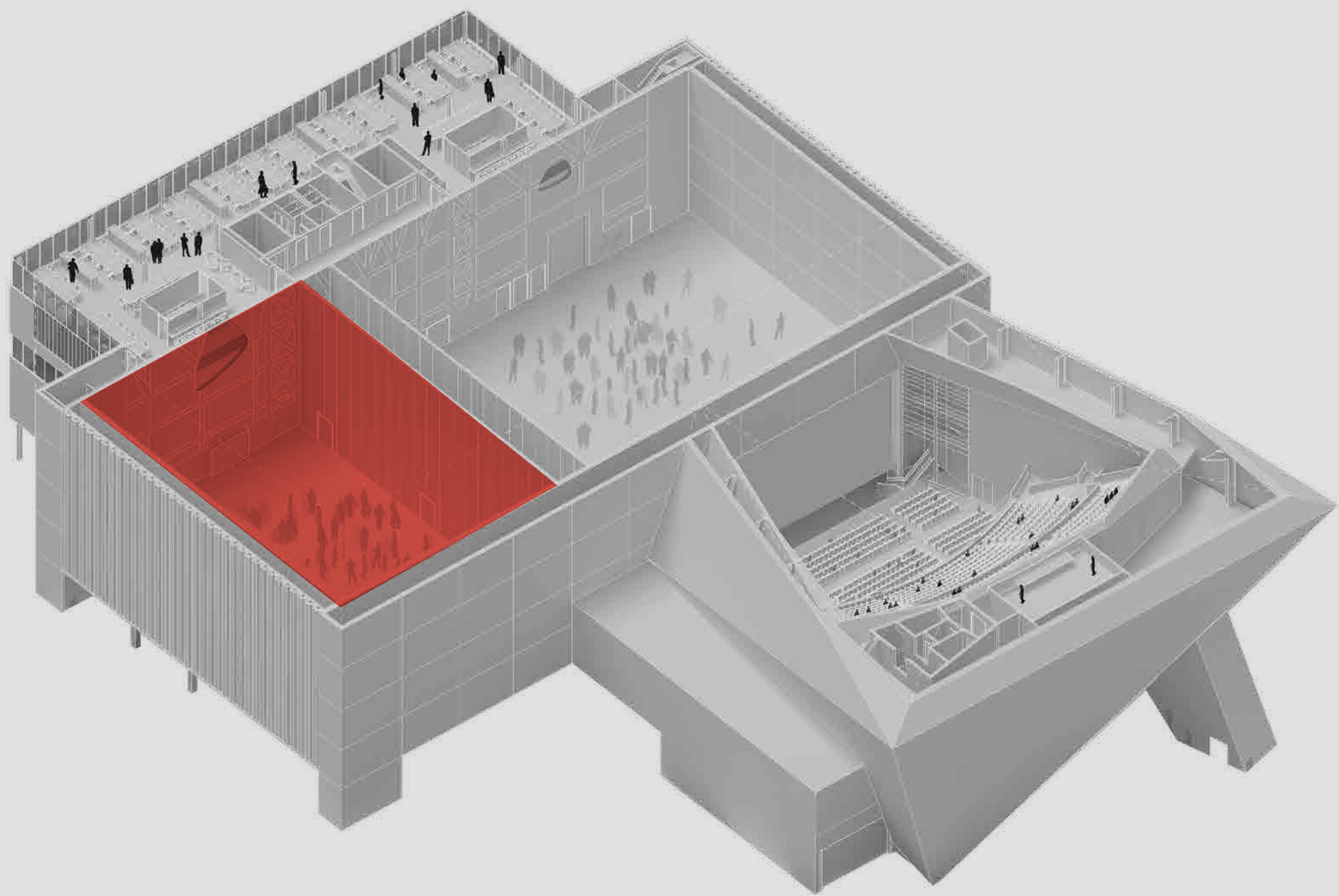


THE WAREHOUSE (NORTH AND SOUTH COMBINED)

Gig	4,500
Standing Reception	2,000
Theatre	1,500
Banquet	950
Height (max)	21m
Height (min)	20m
Length	64.1m
Width	32.7m
Area (m²)	2096.1

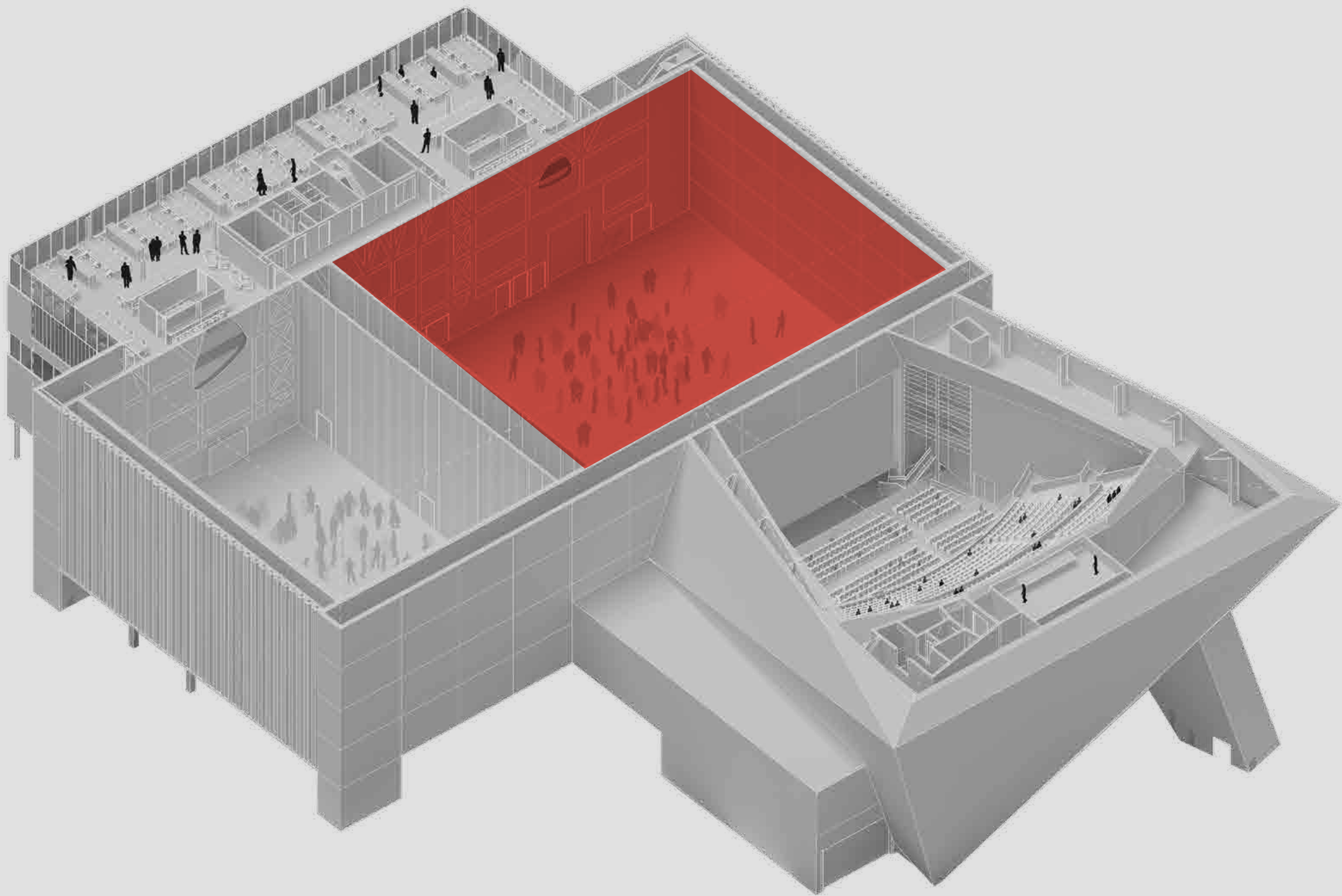
NORTH AND SOUTH WAREHOUSE SPACES

Flex to your needs. With a retractable wall, the Warehouse can be reconfigured into two zones, the North and South Warehouse. Perfect for creating smaller but just-as-impactful spaces and enabling multi-use at any one time.




NORTH WAREHOUSE

Gig	1,100	Height (max)	21m
Standing Reception	900	Height (min)	20m
Theatre	600	Length	32.7m
Cabaret (tables of 8)	224	Width	23.6m
Banquet (tables of 10)	280	Area (m²)	771.7



SOUTH WAREHOUSE

Gig	2,200	Height (max)	20.5m
Standing Reception	1,100	Height (min)	20.5m
Theatre	900	Length	35.8m
Cabaret (tables of 8)	360	Width	32.7m
Banquet	450	Area (m²)	1170.7



**“IT’S LIMITLESS, ISN’T IT?
IT’S SORT OF INTOXICATING IN
TERMS OF THE IDEAS THAT POP UP
AND WHAT YOU COULD DO. IT’S
PRETTY INSPIRING.”**

**ADAM SMITH
CHEMICAL BROTHERS COLLABORATOR**

THE LAW FAMILY HALL

An innovative theatre space designed to allow for a more immersive relationship between the audience and the stage. Home to era-defining artists like Janelle Monáe, Laurie Anderson and ANOHNI and the Johnsons, as well as countless world premieres.



Capable of accommodating up to **1,230** in standard set-up.



AV, stage and **lighting inclusions** available.



Varying stage **depths** to enlarge capacities.



Flexible 'stall' seating, which can be removed entirely. To accommodate a variety of formats including seated – standing/ seated / round.



Tiered seating.



Wheelchair **access** on all levels.



Foyer bars, with impressive **views across the city.**



Proscenium wall connecting the Hall to the Warehouse – **fully acoustically soundproofed** when closed or can be lifted to allow a full building takeover.

The supersized stage connects The Law Family Hall with the Warehouse, meaning you can really think big – from awards ceremonies and conferences to hybrid events

THE LAW FAMILY HALL

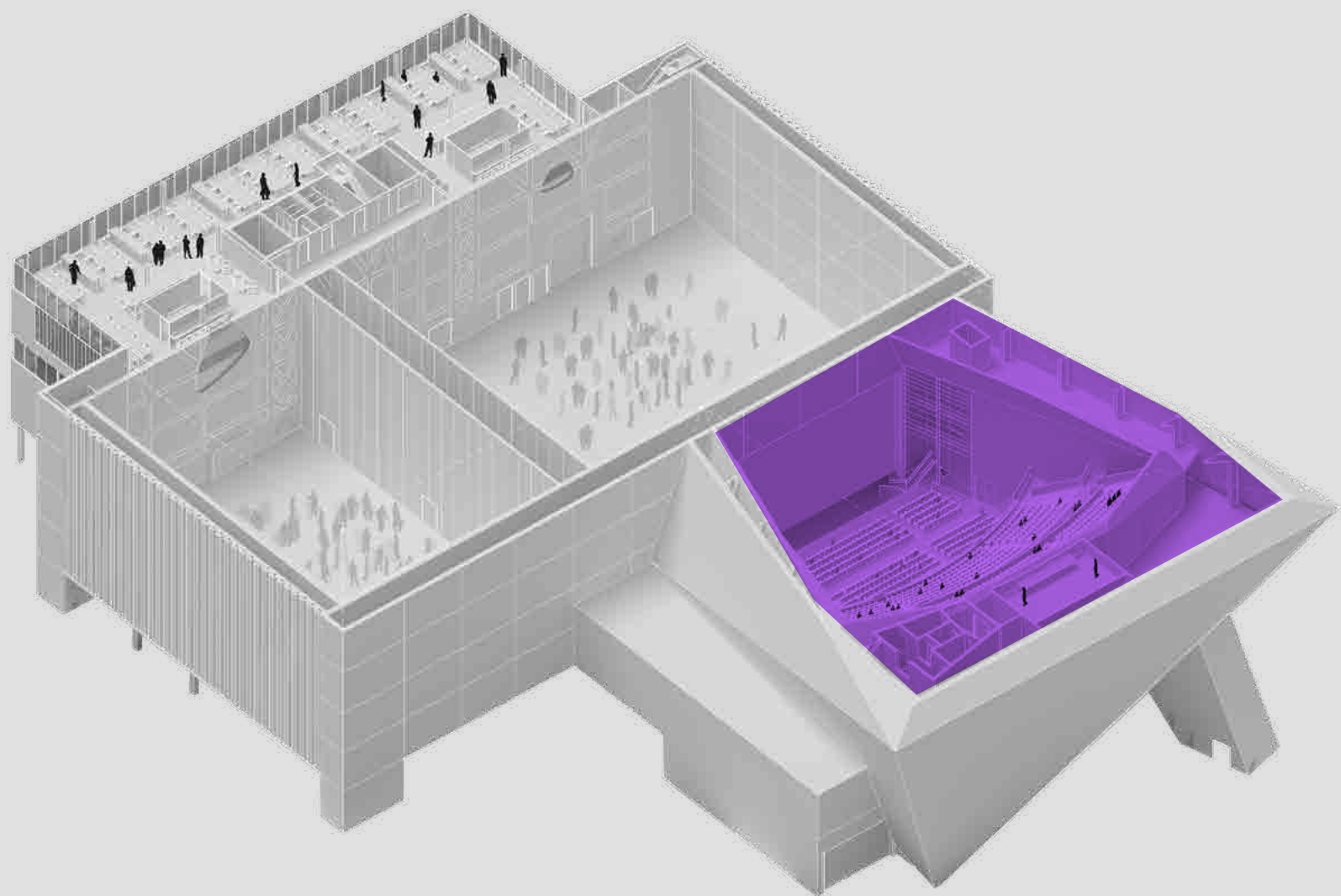
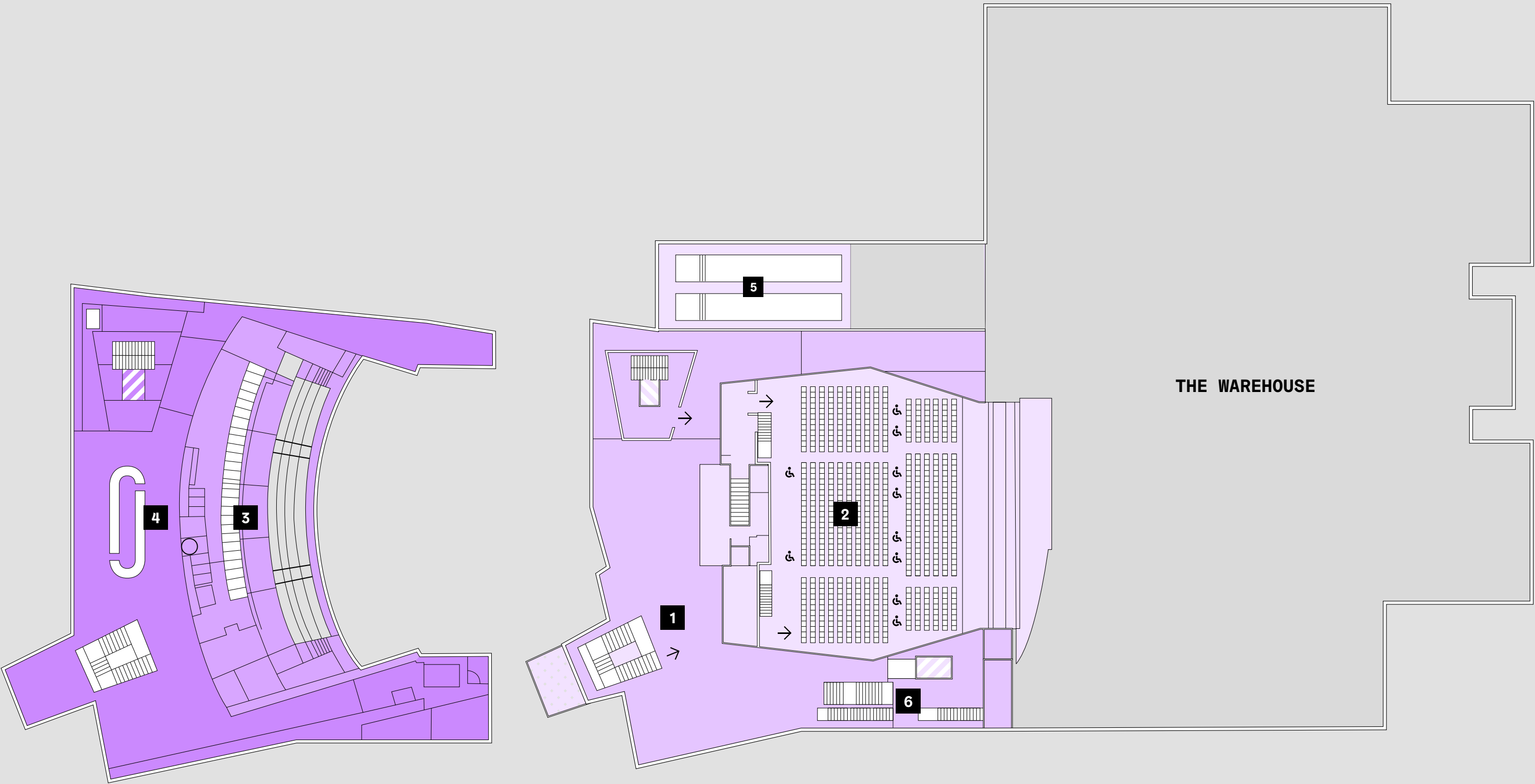
The Law Family Hall is perfect for a range of events, and with our state-of-the-art D&B Soundscape audio technology, we can create a truly unique and 'immersive' surround sound experience for your audience.



THE LAW FAMILY HALL

- 1 1ST FLOOR FOYER
- 2 LOWER STALLS
- 3 BALCONY SEATING
- 4 2ND AND 3RD FLOOR FOYER
- 5 TRUCK LIFT
- 6 STAIRS FROM SOCIAL

- Lifts
- Stairs
- Accessible
- Toilets
- Entrance



THE LAW FAMILY HALL

Seated up to	1,230
Stalls	590
Circle	640
Seated Circle and standing stalls up to	1,554
Standing Stalls	914
Seated Circle	640
Area (m²)	570
Area with Stage	320

THE HALL INTO SOUTH WAREHOUSE

- 1

1ST FLOOR FOYER
- 2

LOWER STALLS
- 3

BALCONY SEATING
- 4

2ND FLOOR FOYER
- 5

TRUCK LIFT

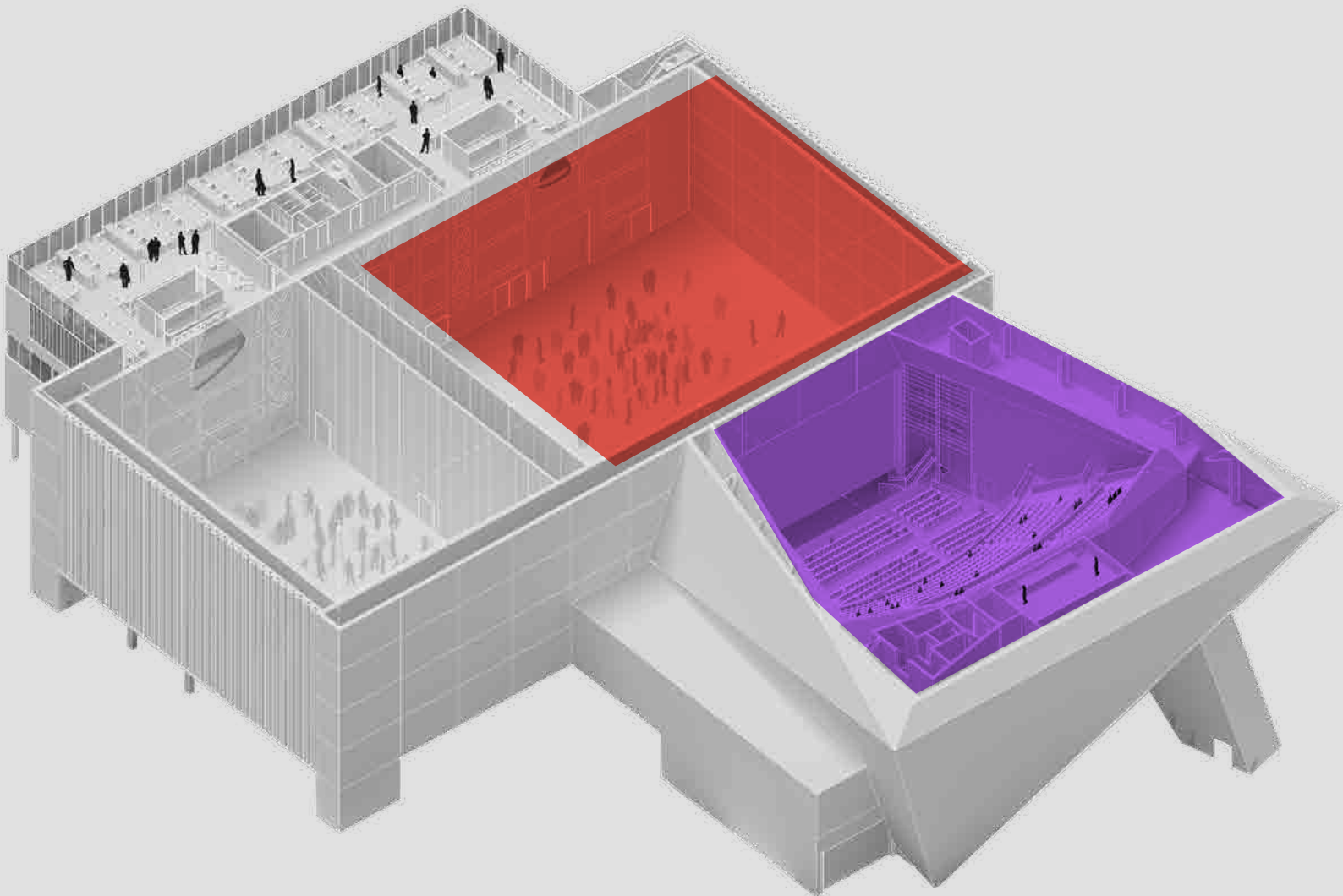
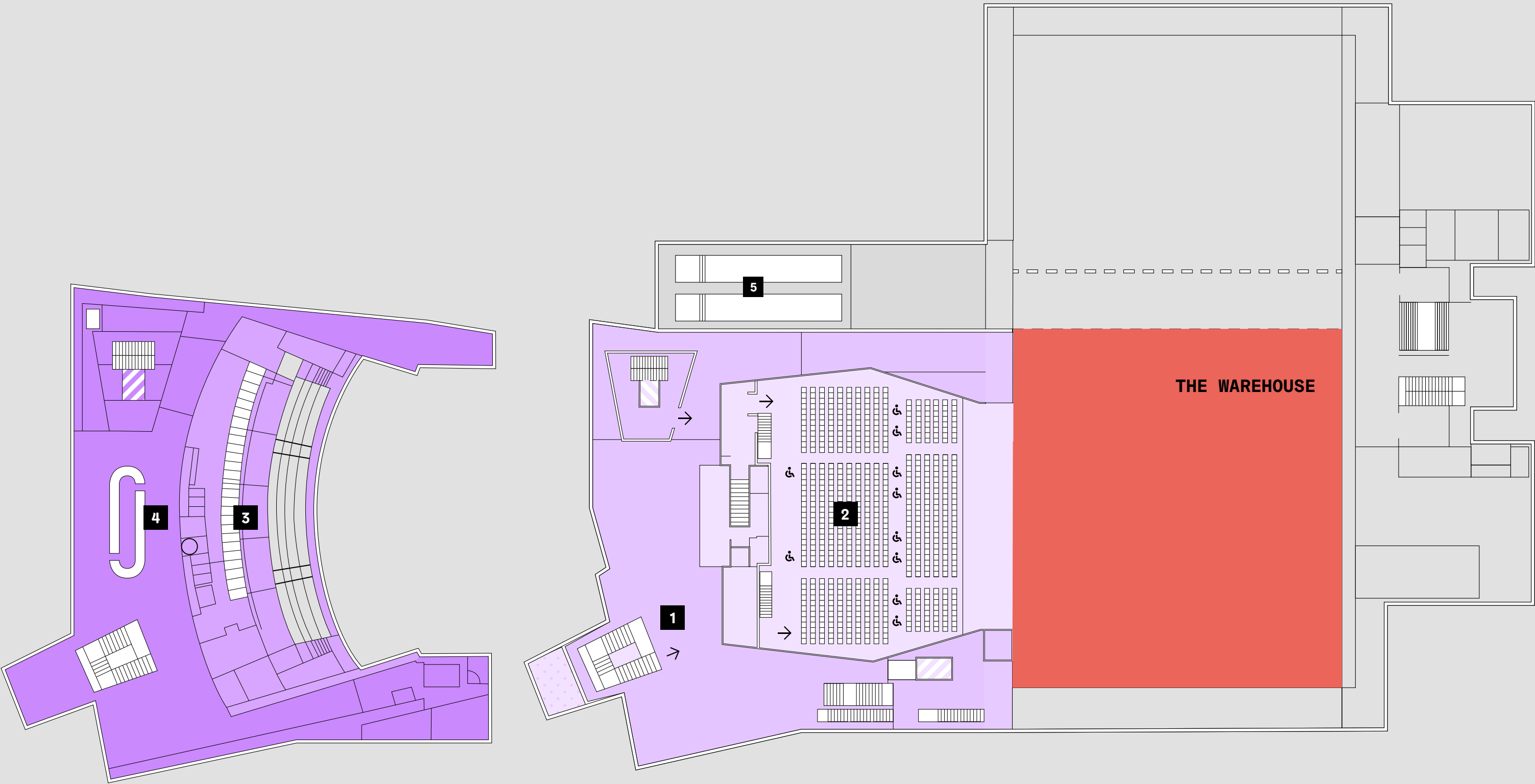
Lifts

Stairs

Accessible

Toilets

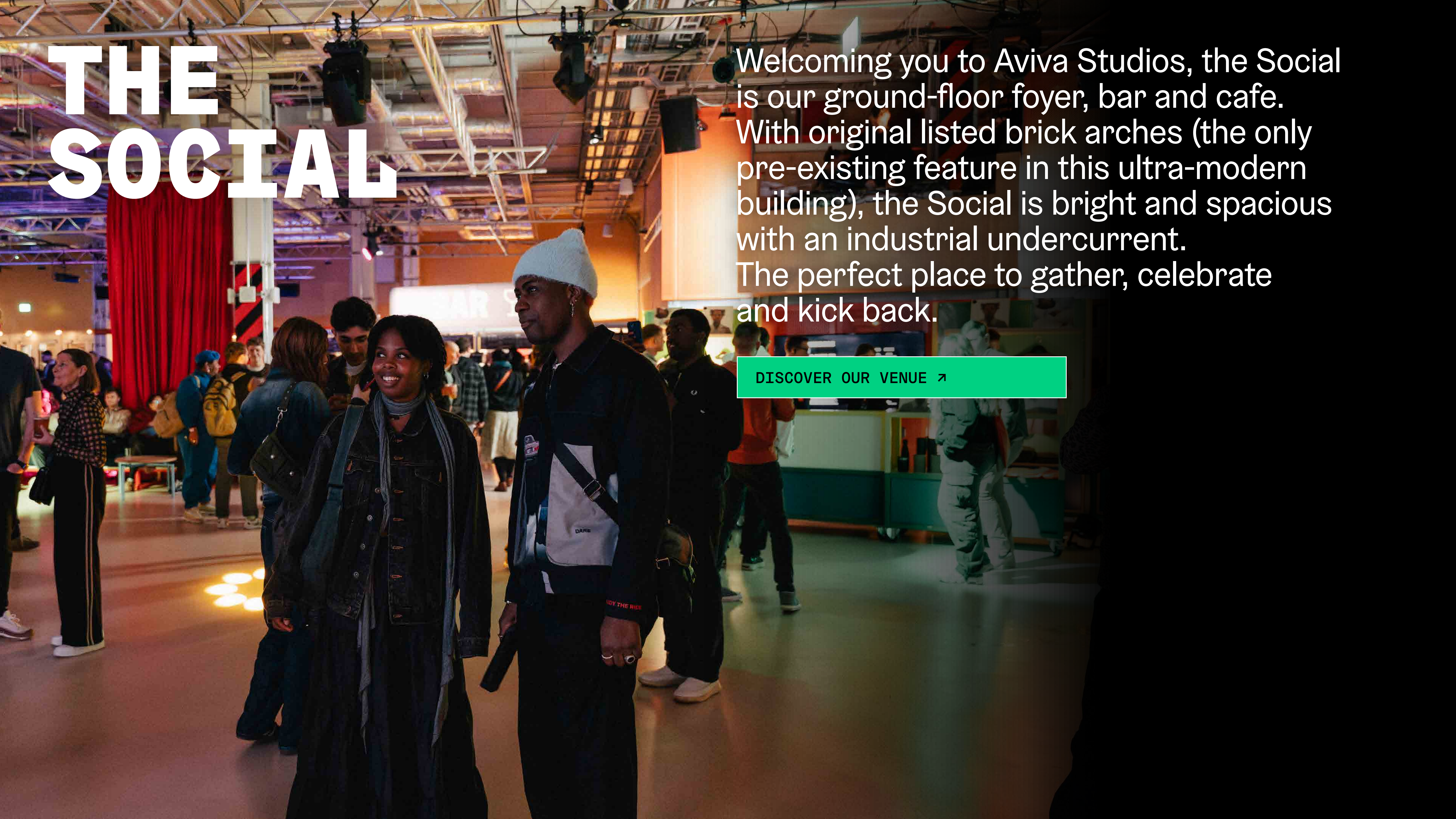
Entrance



THE HALL INTO SOUTH WAREHOUSE

Standing gig capacity	3,060
Circle	640
Fully Seated	1,600

An ultra-flexible space. The proscenium wall can be lifted to connect the Law Family Hall and South Warehouse, creating a bigger space with a range of layouts – the perfect backdrop for everything from awards shows to filming to large conferences. From fully seated to in the round, take advantage of this unique configuration.



THE SOCIAL

Welcoming you to Aviva Studios, the Social is our ground-floor foyer, bar and cafe. With original listed brick arches (the only pre-existing feature in this ultra-modern building), the Social is bright and spacious with an industrial undercurrent. The perfect place to gather, celebrate and kick back.

[DISCOVER OUR VENUE ↗](#)

RIVER SQUARE & UNDER CROFT

With beautiful south-facing views to the River Irwell, River Square is a truly unique outdoor events space ideal for pop-up brand activations, experiential marketing campaigns, live music or markets.



Expected annual footfall of **850,000**.



Supplementing River Square, the Undercroft runs below Aviva Studios, creating a covered external space and enabling activities to take place year-round.



External power supply.



WiFi provision within the Undercroft.



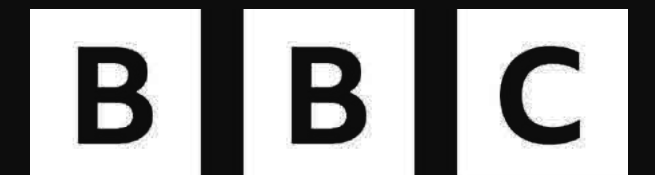
Connected to neighbouring St. John's business and leisure district.



Up to **2,100 m²** of space to be hired across the Public Realm.



PREVIOUS CLIENTS

The Amazon logo, featuring the word "amazon" in a lowercase sans-serif font with a curved arrow underneath it.The Netflix logo, consisting of the word "NETFLIX" in a bold, uppercase sans-serif font.The DAZED logo, featuring the word "DAZED" in a bold, uppercase sans-serif font.The MUBI logo, featuring the word "MUBI" in a bold, uppercase sans-serif font followed by a cluster of six dots.The Aviva logo, featuring a stylized "A" icon followed by the word "AVIVA" in a bold, uppercase sans-serif font.The GLAMOUR logo, featuring the word "GLAMOUR" in a bold, uppercase sans-serif font.The FANE logo, featuring the word "FANE" in a bold, uppercase sans-serif font.The dentsu logo, featuring the word "dentsu" in a lowercase sans-serif font.

TESTIMONIALS



“We chose Aviva Studios for the VW Accreditation Celebration because we wanted to take our large group of guests to a non-traditional space, which could not only serve the best food and drink and put on a big show – but was also somewhere they wouldn’t have been to before. Working with the venue team was a pleasure from start to finish. As well as being friendly, efficient and flexible, but they also came up with some great ideas on the show design, helping to make the dinner space look and sound fantastic!”

Ben Way, Director, Energy

“Factory international allowed us to achieve our vision with its combination of spaces and rustic industrial feel.”

St Anne’s Hospice, Great Mancunian Ball

“It’s an exciting venue to work with and the scope for creative possibilities is unmatched in Manchester”

BIMM

“Working with you guys was a dream”

MTV EMA

WE'RE HERE TO HELP

Creativity runs through our veins.

Be supported and inspired by Factory International's world-class creative community.

When you hire any of our spaces, our in-house event, technical and production teams will be on hand to help seamlessly bring your vision to life.

Our technical expertise means you can think big; whether it's innovative tech, lighting or sound – or even transmitting your event around the world – we'll help you get creative.

ACCESS

A photograph of an outdoor event. In the foreground, a woman wearing a bright pink jacket, a grey cap, and patterned trousers is seated in a red and black wheelchair. She is looking towards the right. To her left, another woman with long brown hair, wearing a patterned dress and glasses, is sitting on a grey concrete block and looking at her phone. The background is filled with other people and colorful chairs, suggesting a large gathering or festival.

At Aviva Studios, we're driven to make everything we do more inclusive, accessible and diverse.

This includes making sure our venue is comfortable and easy to visit for everyone. We have a dedicated Access Manager who has overall responsibility for ensuring the venue is as accessible as possible, but also ask everyone who works with us to put access at the heart of their events.

SUSTAINABILITY



On a path towards zero-carbon activity by 2028, we're working with industry partners to test and pilot innovative sustainability technology at Aviva Studios.

We ask all our partners to consider how they can reduce the environmental impact of their events – from encouraging sustainable travel to and from the venue to considering the materials they use.

Our experienced events team are always on hand to provide guidance and support in this area.

GET IN TOUCH

Ready to plan your event?

To discuss what's possible at Aviva Studios in more detail, get in touch with our events team at:
venuehire@factoryinternational.org

AVIVA studios

