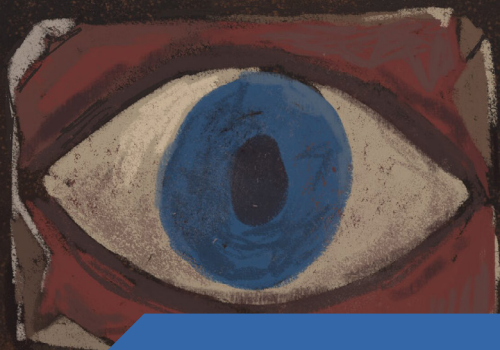


factory
international
presents

ACTIVITY PACK

AI WEIWEI: BUTTON UP! LOGBOOK



AVIVA studios

St. John's, Manchester avivastudios.co.uk



©
welcome

This activity book has been designed to accompany you through Ai Weiwei: Button Up! at Aviva Studios, home of Factory International.

It will provide information about the artworks as well as new ways of interacting with them.

Be curious. Follow the map.
Find your own answers.

If you are reading this,
it means I left this work unfinished.

In the year 1839, I sailed from
Manchester to China carrying goods
made in its red brick factories,
hoping to trade them.

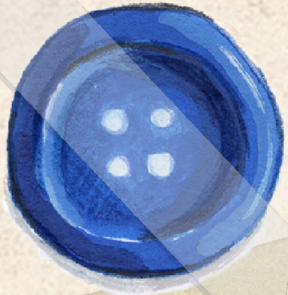
Instead, I found a land under strain,
and two empires moving toward war.
So I travelled to understand what
was happening in front of me.

I have marked these paths for you
on a map. Pick one. Look closely.
Find the answers I couldn't find.

By the end of your journey, offer your
wisdom to the world.

Good luck,
The Seeker

Which object will you pick?
Follow their marked path...



I once carried 30,000
of these, created in the
factories of Manchester.
Now only one remains,
discarded and unused.

Button = Green Path

I took this from
Manchester before I left.
It is part of what the
city is built from,
placed with others to hold
up walls that never fall.

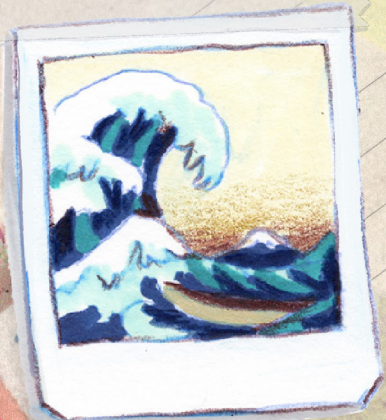
Brick = Red Path



I drew this on a piece
of paper while we sailed
towards China.

I thought of movement,
of distance, of the sea
as something without
borders.

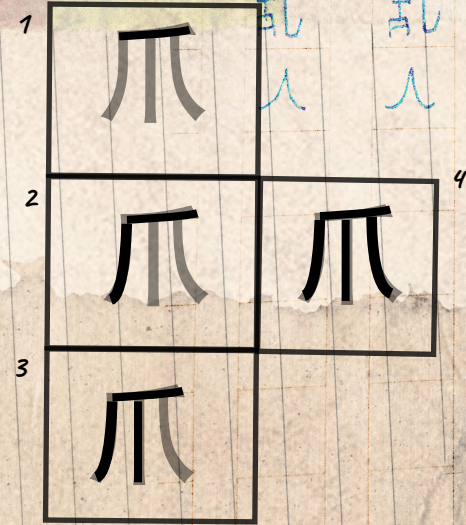
Wave = Blue Path



I have been told that to write
a Chinese character you should
start from the top, slowly making
your way to the bottom - but also
from the left to the right.

If there's a part of the
Chinese character that contains
other parts, you need to do the
outside first.

爪



Practice with these two following
the example

工



= Work

天
心
水
马
工

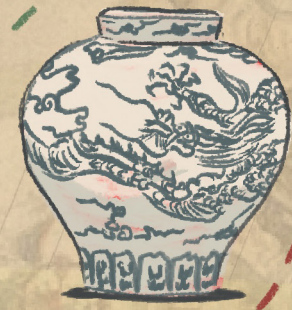
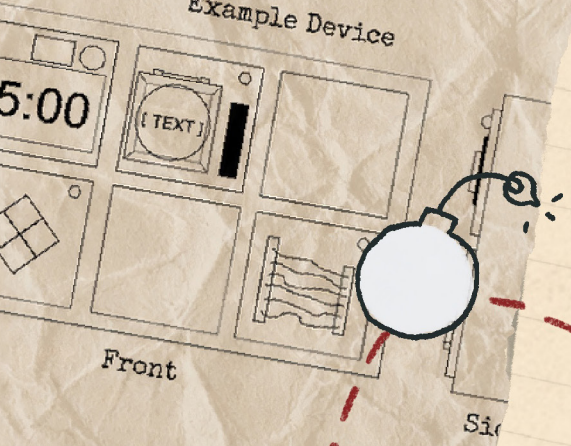
天



= Sky

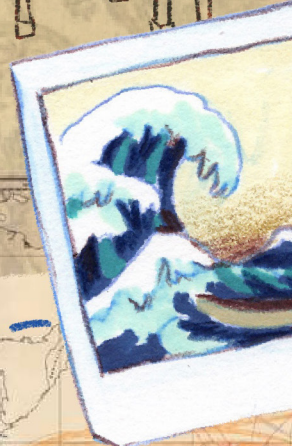
Explode when its countdown timer reaches 0:00
When recorded. The only way to defuse a device
before its countdown timer expires.

Example Device



Up to 11 modules that must be disarmed
in any order.

g modules can be found in Section
l are described in Section 2.



- 1 - Find your chosen route
- 2 - Follow it through the exhibition
- 3 - Find the artwork's page on this logbook
- 4 - Discover the artwork's Chinese character
- 5 - Add it to the map

天

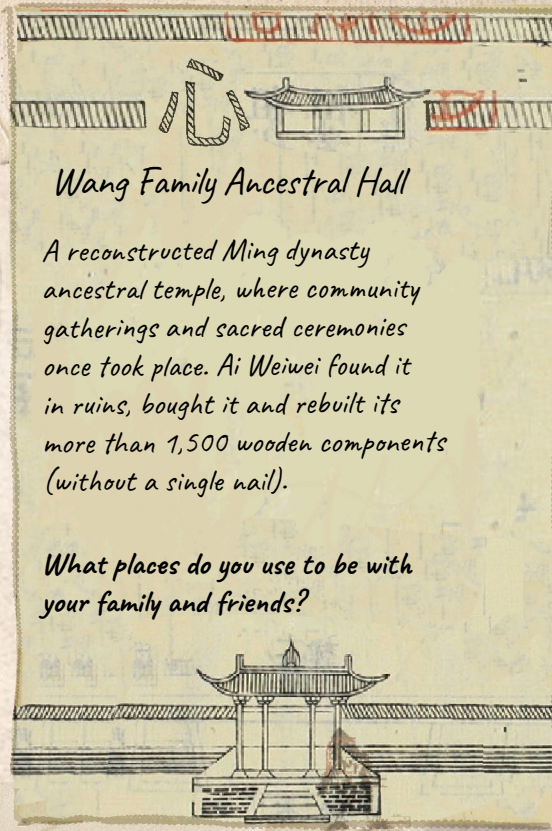
Eight-Nation Alliance Flags

Ai Weiwei's father, Ai Qing, a famous poet, was chair of a committee tasked with designing a new Chinese flag, seal and anthem.

These flags show how nations and empires are built through industry, work, conflict and collaboration.

What are these flags made of?

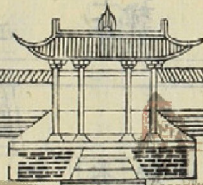
What do you think flags can mean to people?



Wang Family Ancestral Hall

A reconstructed Ming dynasty ancestral temple, where community gatherings and sacred ceremonies once took place. Ai Weiwei found it in ruins, bought it and rebuilt its more than 1,500 wooden components (without a single nail).

What places do you use to be with your family and friends?



Circle of Animals / Zodiac Heads



? These 12 Zodiac Heads were once a fountain clock at the Old Summer Palace in Beijing. They would spout water to tell the time.

They were looted by the French in 1860, alongside a Pekingese dog (Looty), who was gifted to Queen Victoria. Only seven of the original Zodiac Heads are back in China today.

If you had one of the Zodiac Heads in your house, would you return it back to China?

Can you name all 12 animals?

Surfing (After Hokusai)

A homage to Hokusai's The Great Wave, one of the most reproduced artworks in the world. Ai Weiwei reimagines famous masterpieces from art history and adds unexpected elements that reference today's social and political issues. Often, they are artworks his father introduced to him as a child.

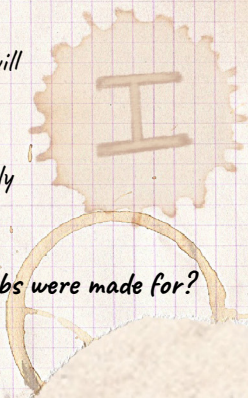
Do you think art can change the world?



History of Bombs

Bombs are carefully designed and engineered by people and companies far away from where they will be dropped. These bombs in front of you are made out of toy bricks, and they are life size. Ai Weiwei places them carefully in front of you discussing only technical facts.

What do you think these bombs were made for?



La Commedia Umana

This 2,700 kg sculpture is composed of around 2,000 pieces, and it's one of the largest works ever made in Murano glass. Although this type of glass is usually known for its colorful and decorative pieces, here you can see objects showing the dark side of humanity. Ai Weiwei uses them to create a chandelier that casts no light.

Looking at the sculpture from afar, how does it make you feel?

Looking at the sculpture's details, have your feelings changed?



Symmetry will reveal 'Person'

乱 luan
chaos / disorder / upheaval

爪 zhǎo
claw / talon

力 lì
force / strength

工 gōng
work

马 mǎ
horse

水 shuǐ
Water

心 xīn
mind / heart

天 tiān
Sky

人 rén
Person



Dragon Vase

The five-clawed dragon was used for a long time as a symbol of the Emperor's absolute power. No one else could use it, risking being executed if they did so inappropriately. Creating this replica, Ai Weiwei defies old traditions.

How many claws does the dragon have? Why?



I should put the vase together...

If the people on the boat are running away from one of the other artworks, which one would it be?

元二〇〇三年 / 中華民國九十二年四月九日 星期三

WEDNESDAY, APRIL 9, 2003

乱

Law of the Journey

World Journal

Ai Weiwei has been investigating the global refugee crisis. He has interviewed many people, from refugees to politicians, in different places around the world such as the Greek island of Lesbos, refugees to politicians.

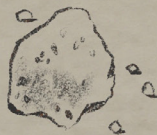
Witnessing the boats arriving in Lesbos convinced Ai Weiwei that he had to dedicate himself to this tragedy. He has created many works based on this investigation. This is the largest individual object he has created in his career.

If you have reached the end, you must have walked further than I ever did. Look at all the Chinese characters you've discovered in these pages.

Which one would you give to...



...someone trying to free their mind?



...someone trying to imagine the future?



...someone trying to understand the past?

Draw your chosen Chinese characters in this square, together, as beautifully as you can.



Take a picture and share your square with us, email it to learning@factoryinternational.org
Learning Resources Consultant: Carlos Marfil
Illustrator: Nadia Kawafi @kawafi
Young People and Family Lead: Amber Calland
Thanks to: Iris Chiu and RJ Lloyd